

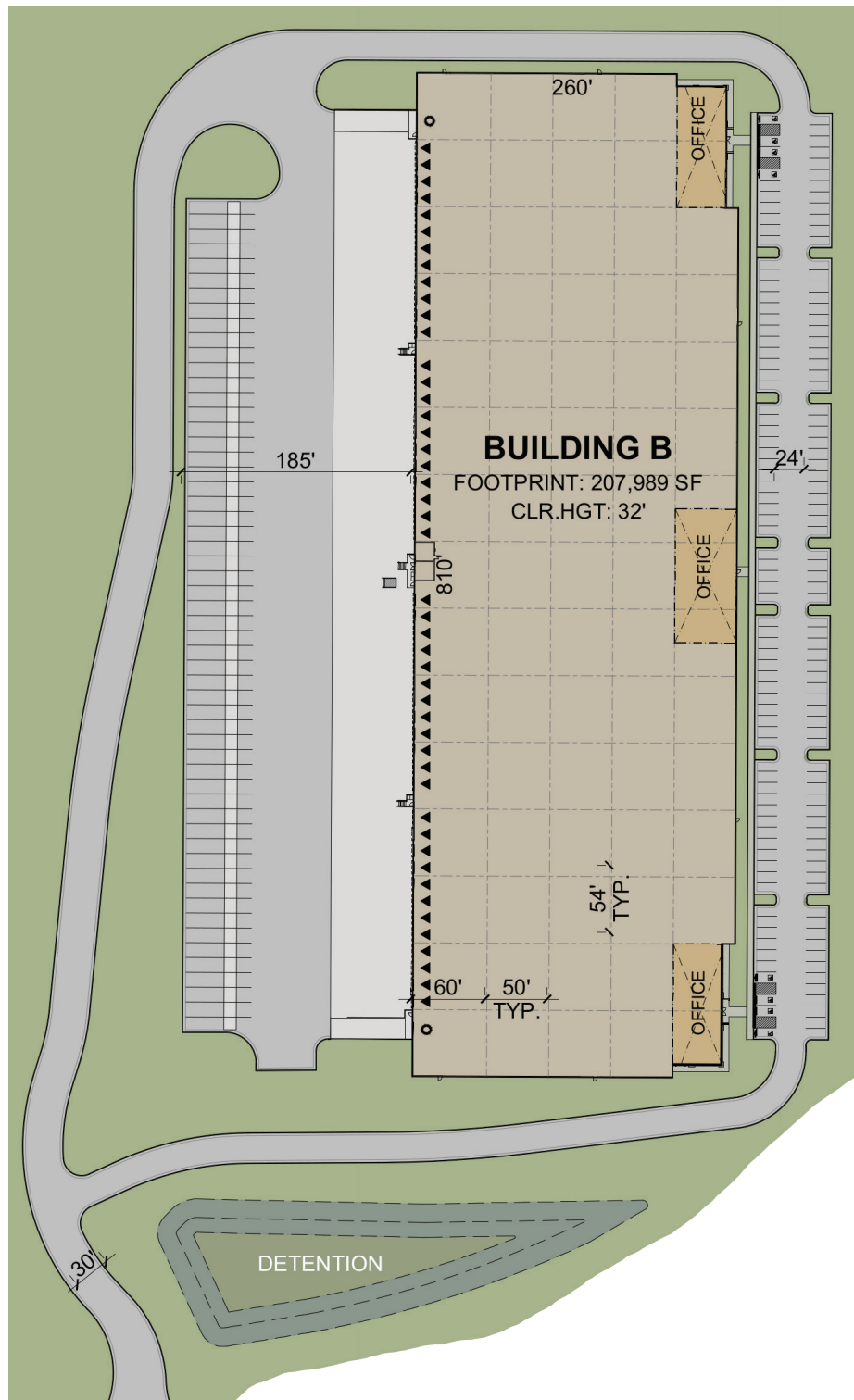


BUSCH LOGISTICS PARK

1187 Cass White Road
Cartersville, GA

**207,989 S.F. REAR-LOAD FACILITY
NORTHWEST SUBMARKET**

Hines |  **JLL**



BUILDING SPECIFICATIONS

| | |
|---------------------------|--------------------------|
| TOTAL SF: | 207,989 SF |
| CONFIGURATION: | Rear-load |
| SLAB THICKNESS: | 7" |
| COLUMN SPACING: | 54' w x 50' d |
| LOADING BAY: | 60' loading bay |
| CLEAR HEIGHT: | 32' clear minimum |
| DOCK-HIGH DOORS: | 47 |
| DRIVE-IN DOORS: | 2 |
| TRUCK COURT DEPTH: | 185' deep |
| AUTO PARKING: | 150 auto spaces |
| TRAILER STORAGE: | 56 trailer spaces |
| SPRINKLER: | ESFR |





Interstate 75: 2 miles
 Interstate 285: 40 miles
 Interstate 20: 48 miles



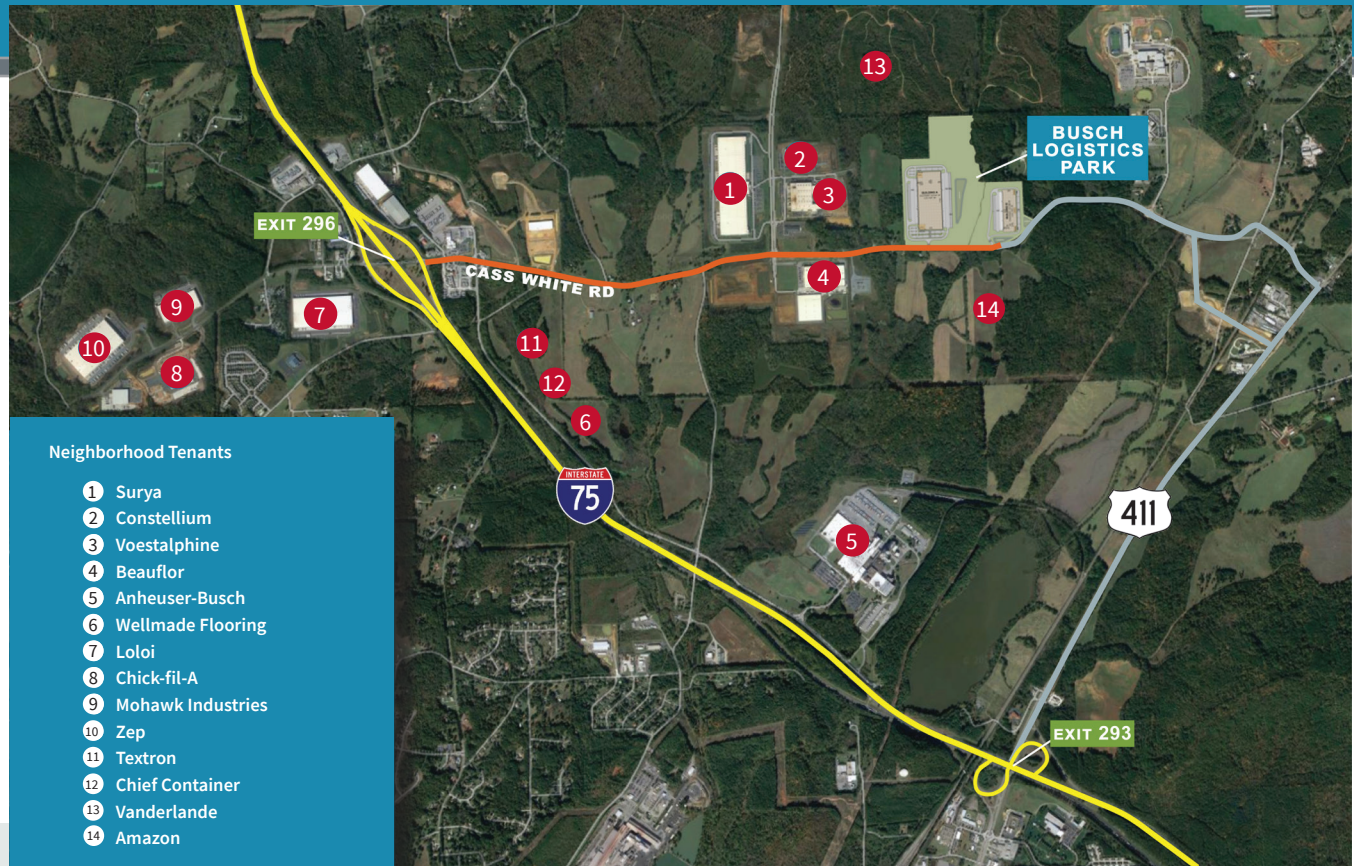
Hartsfield-Jackson Atlanta
 International Airport: 60 miles
 Chattanooga Airport: 68 miles



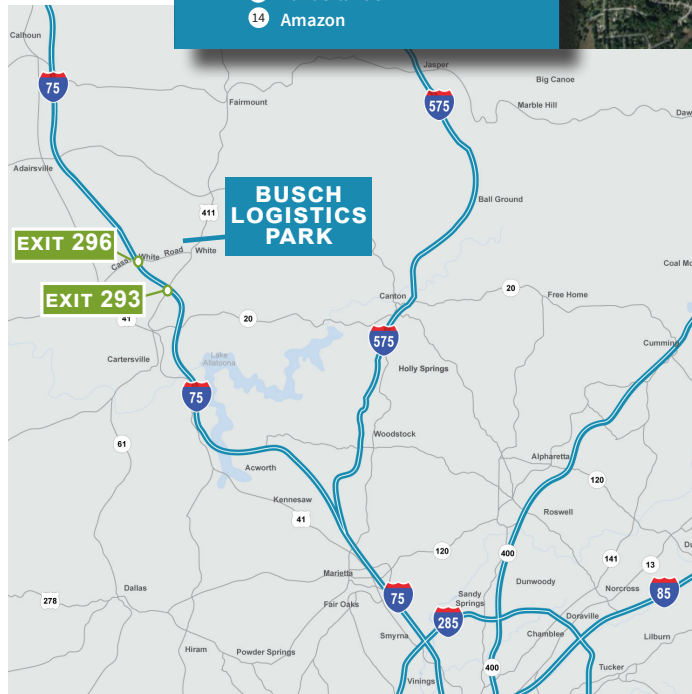
Appalachian Regional
 Port: 47.5 miles
 Port of Savannah: 298 miles



Dalton, GA: 42 miles
 Atlanta, GA: 57 miles
 Chattanooga, TN: 70 miles
 Savannah, GA: 298 miles



- Neighborhood Tenants
- 1 Surya
 - 2 Constellium
 - 3 Voestalpine
 - 4 Beauflor
 - 5 Anheuser-Busch
 - 6 Wellmade Flooring
 - 7 Lolo
 - 8 Chick-fil-A
 - 9 Mohawk Industries
 - 10 Zep
 - 11 Textron
 - 12 Chief Container
 - 13 Vanderlande
 - 14 Amazon



KEY FACTS



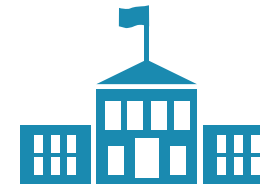
\$66,475

**MEDIAN HOUSEHOLD
INCOME**

Note: The above data is based on a 45-minute drive-time from Busch Logistics Park.

LABOR DATA

Busch Logistics Park has nearly 107,964 targeted workers in the industrial labor force within a 45-minute drive time. Approximately 11% of the total labor force located near Busch Logistics Park are workers in the industrial labor force.



**7 TECHNICAL SCHOOLS
WITHIN A 45-MIN DRIVE TIME**

Note: The industrial labor force includes transportation/warehouse, wholesale trade and manufacturing workers.

FOR LEASING INFORMATION, PLEASE CONTACT:

Reed Davis
O: 404 995 2227
C: 404 844 9128
reed.davis@am.jll.com

Bob Currie
O: 404 995 2280
C: 404 368 7111
bob.currie@am.jll.com

Hines | JLL

Jones Lang LaSalle © 2018 Jones Lang LaSalle IP, Inc. All rights reserved. All information contained herein is from sources deemed reliable; however, no representation or warranty is made to the accuracy thereof. 03.18